

String Encoder

Mates To Virtually Any Encoder
 Ranges: 0-600 to 0-1700 inches
 Easy Encoder Attachment

<Extended Range>

PT9600

Specification Summary:

GENERAL

Full Stroke Range Options—on this datasheet 0-600 to 0-1700 inches
 Motion Conversion Ratio.....12.6 inches per turn, *see ordering information*
 Accuracy
 Typical ... the lesser of 0.02% f.s. or 0.04% of measurement $\pm 1/2$ pulse max.
 Bestnot less than 0.001 in. (0.03 mm)
 Repeatability $\pm 0.02\%$ of measurement $\pm 1/2$ pulse max.
 Measuring Cablestainless steel, *see ordering information*
 Enclosure Material powder-painted aluminum
 Encoder Shaft Coupling aluminum flexible coupling
 Maximum Allowable Rotational Sensor Torque 1.0 in-lbs.
 Maximum Retraction Acceleration *see ordering information*
 Maximum Velocity *see ordering information*
 Weight 14 lbs. max.

ENVIRONMENTAL

Operating Temperature -40° to 200°F (-40° to 90°C)



Our unique linear-to-rotational, industrial-grade measurement module mates to virtually any encoder, giving you a cost-effective long-range linear position measurement solution that precisely fits your requirements.

This modular approach delivers the ultimate in flexibility. To order, simply select the measurement range and encoder mounting style—it's that easy! We even supply all the necessary encoder mounting tools and attaching hardware.

Ordering Information:

Model Number:

PT9600- _____ **- 1 1** _____
order code: **R** **A** **B** **C** **D**

Sample Model Number:

PT9600 - 1500 - 111 - F01

R range: 1500 inches
C cable exit: front
D rotational sensor mounting style: F01 (2.5-in. sq. flange)

» *Trying to reorder but can't find your existing model number? Please contact factory for help.*

Full Stroke Range & Motion Conversion Ratio:

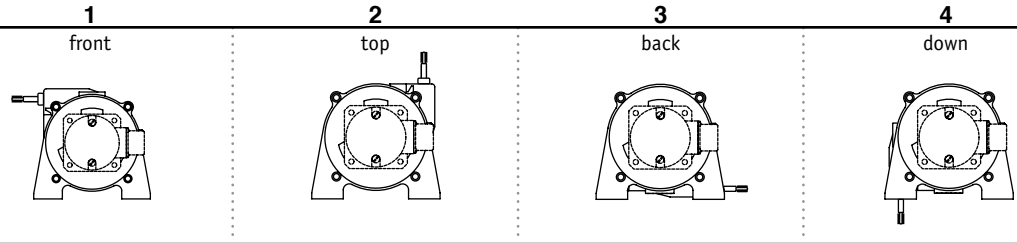
R order code:	0600	0800	1000	1200	1500	1700
full stroke range, min:	600 in.	800 in.	1000 in.	1200 in.	1500 in.	1700 in.
cable tension ($\pm 30\%$):	25 oz.	25 oz.	24 oz.	24 oz.	23 oz.	23 oz.
measuring cable:	.034-in. dia. nylon-coated stainless	.024-in. dia. nylon-coated stainless	.024-in. dia. nylon-coated stainless	.019-in. dia. nylon-coated stainless	.015-in. dia. non-coated stainless	.015-in. dia. non-coated stainless
conversion ratio: 1 turn =	12.673 \pm .010 in.	12.642 \pm .010 in.	12.642 \pm .010 in.	12.626 \pm .010 in.	12.613 \pm .010 in.	12.613 \pm .010 in.

INTERTECHNOLOGY

1 Scarsdale Road, Don Mills, ON M3B 2R2
 Tel: 416-445-5500 Fax: 416-445-1170 TOLL FREE: 1-800-465-1600
 E-Mail: sales@intertechnology.com Website: www.intertechnology.com

Cable Exit:

① order code:



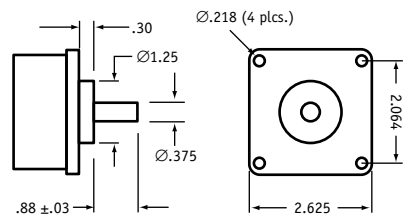
Rotational Sensor Mounting Style:

① order code:

F01	F02	S01	S02	S04
2.5-in. Flange Mount 3/8-inch shaft	2-in. Flange Mount 3/8-inch shaft	Face-Mount 6 mm shaft M4 mounting screws	Face-Mount 10 mm shaft M4 mounting screws	Face-Mount 10 mm shaft M3 mounting screws

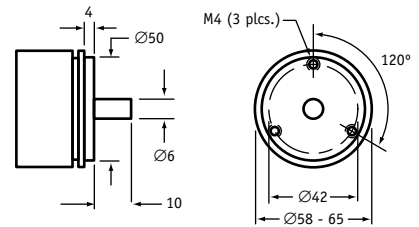
Note: If you don't see your encoder style, please contact factory. All encoder types supported.

F01 - 2½-inch Sq. Flange Mount (3/8-inch shaft)



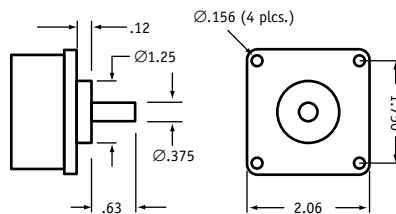
all dimensions are in inches

S01 - Face-Mount (6mm shaft/M4 screws)



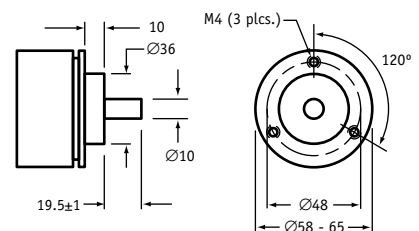
all dimensions are in mm

F02 - 2-inch Sq. Flange Mount (3/8-inch shaft)



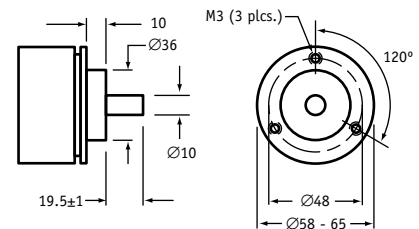
all dimensions are in inches

S02 - Face-Mount (10mm shaft/M4 screws)



all dimensions are in mm

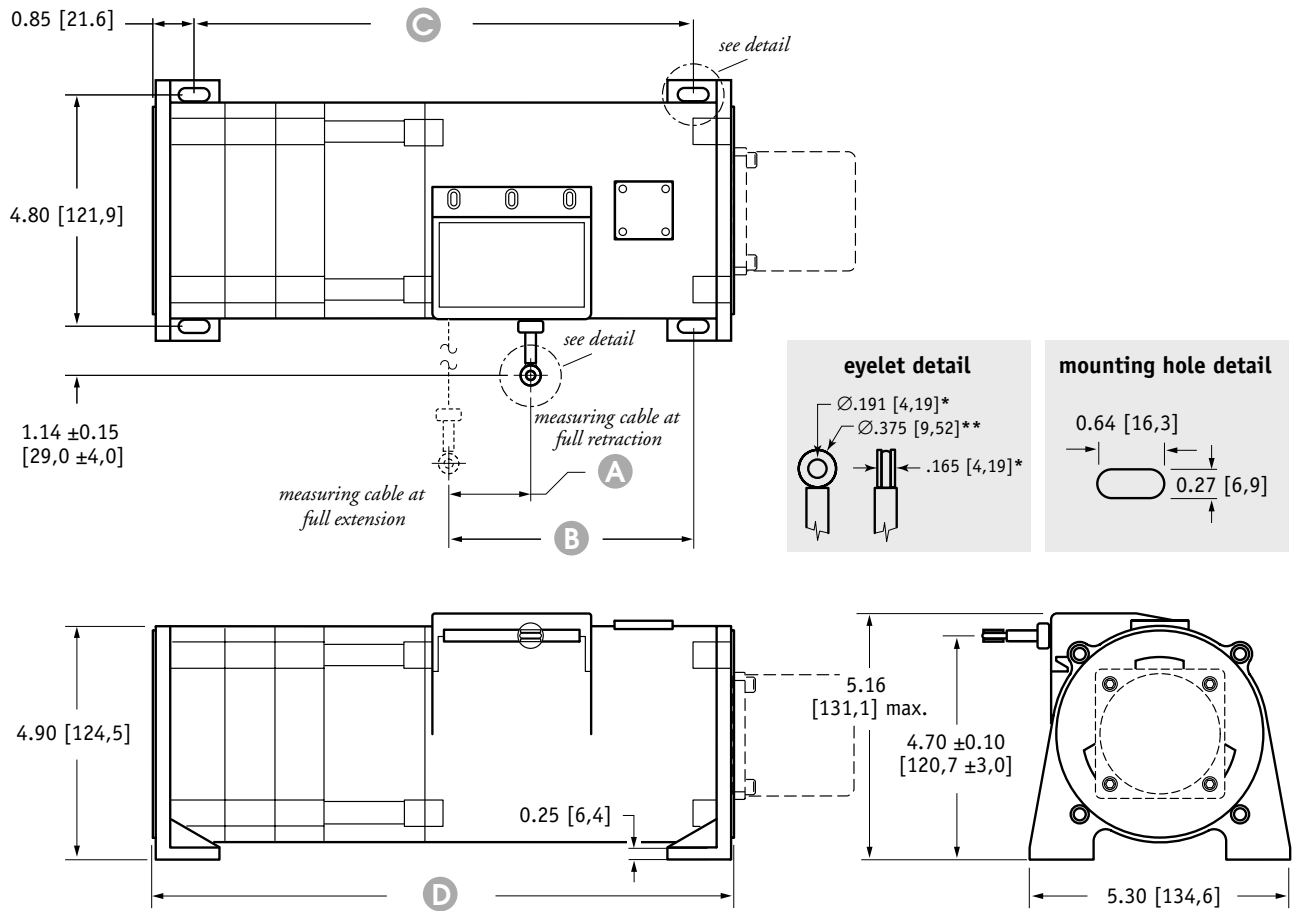
S04 - Face-Mount (10mm shaft/M3 screws)



all dimensions are in mm

PT9600 • Extended Range • Cable Reel Mates To Virtually Any Encoder

Outline Drawing



	<i>full stroke range</i>					
	600 in.	800 in.	1000 in.	1200 in.	1500 in.	1700 in.
A	1.76 [44,7]	1.58 [40,1]	1.98 [50,2]	1.49 [37,8]	1.86 [47,2]	2.11 [53,6]
B	4.52 ±0.15 [114,8 ±4,0]					
C	10.40 ±0.08 [264,2 ±2,0]					
D	12.15 [308,6] max.					

DIMENSIONS ARE IN INCHES [MM]
tolerances are 0.03 IN. [0.5 MM] unless otherwise noted.

* tolerance = +.005 -.001 [+,.13 -.03]
** tolerance = +.005 -.005 [+,.13 -.13]

version: 2.0 last updated: May 4, 2006