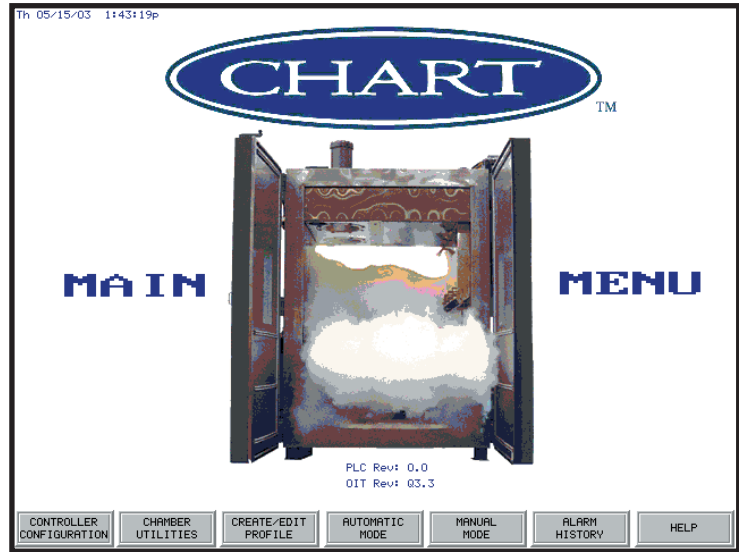


# CTI CONTROLLER

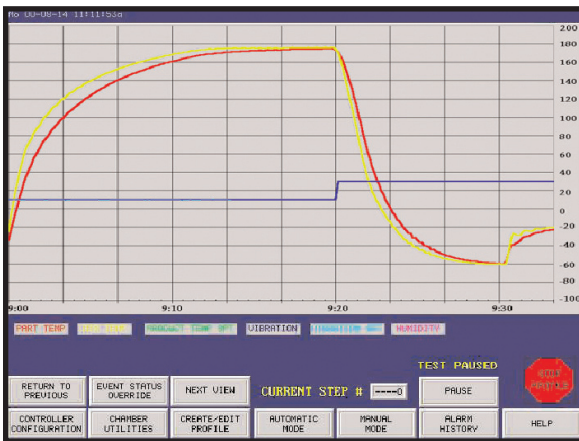
## TOUCHSCREEN PLC CONTROLLER

Chart offers a touchscreen PLC standard on all test chamber models. The touchscreen PLC controller makes controlling your test chamber easier than ever. Whether you are performing a thermal only profile or thermal with vibration, the Chart touchscreen PLC controls all functions in one controller. The new controller is faster, more flexible and more expandable than traditional methods of controlling test chamber functions.

The Chart PLC is capable of networking to other chambers and can be controlled remotely. In addition to controlling chamber functions, the PLC controller serves as a test and data acquisition system. Profiles can be viewed and modified on the easy-to-read color display. A standard menu bar appears at the bottom of the screen, reducing the number of keystrokes needed for common functions. The informative, context-sensitive help button allows the user to gain immediate access to information, without having to search for the user manual.



CTI Controller Main Menu



Color Touchscreen Controller

Another benefit of the touchscreen PLC controller is the ability to track and trouble-shoot the performance of the chamber. The touchscreen has a Run-time data screen. This feature allows tracking elapsed time for various components including; motors, hammers and heater banks. The system also offers preventive maintenance forecasts and valuable troubleshooting information. The I/O (Input/Output) monitor menu lists the status of all inputs and outputs associated with the chamber configuration. At a glance, operators and service technicians are able to see the current status of the chamber and what needs to be adjusted to achieve the desired result.



Innovation. Experience. Performance.™

# CTI CONTROLLER

## TOUCHSCREEN PLC CONTROLLER

---

### **Touchscreen Interface:**

The latest operator interface technology brings bright colors, high reliability and a user friendly interface. The touchscreen interface allows the user to select a valid input by changing the selections available after each touchscreen selection is made. For example, if only three inputs are valid at a given time, the interface shows only those three buttons.

### **On-Screen Trend Chart:**

While the chamber is running, the operator interface shows the chamber's performance in a graphical trend chart. Many people find it easier to understand graphical data than digital values. The trend chart tracks set points and current values in real time. Another feature of the trend chart is the ability to look back in time to see previous chamber performance.

### **Multiple Run-Time Views:**

While the chamber is running, its performance can be viewed in a variety of ways. The most popular is the large trend chart which shows a color graphical representation of the chamber's temperatures and vibration levels in real time. For those who desire digital values, one of the views shows set points and current values in large digital format for easy viewing from long distances. For those who like a little of both worlds, one view has all the digital values below a smaller trend chart.

### **Modular Design:**

The control system is designed with modularity in mind. The chamber's controller can be scaled up to control and monitor additional items such as auxiliary and vibration temperatures inputs, log test data and fire outputs. Chart's modular design permits ease of future upgrades in the field.

### **Multiple Alarm Levels with Log:**

The controller has many different alarm levels that can be set by the technician. A factory level is set at the extremes to protect the chamber. A site level can be set by the area supervisor and is password protected. A profile level can be set differently for each profile run. Each of these alarms has configured actions because some may be more important to the user than others. Any alarm that occurs is logged in the controller's memory for review at a later time.

### **Graphical Profile Building:**

While creating new profiles, the controller displays a graph of the profile being defined as each step is entered. This makes it easy to spot any errors in the profile before the test is run.

### **Profile Error Checking:**

When saving a profile to memory, the controller scans it and looks for fundamental mistakes. If any are found, the controller indicates what the error was and during which step it was found. When the profile passes the check, it can then be saved to memory.

### **Screen-Sensitive Help:**

Each screen has a help key. Touching the help key accesses a page that describes the user's current page. The help page gives a brief overview of the function of the screen, and gives an explanation of all the available buttons on that screen.

### **Standard Menu on Bottom:**

A standard menu bar is displayed at the bottom of every screen to help reduce the number of buttons the user needs to press. This allows the user to move through the interface more quickly.

### **Major Name Brand Quality:**

Our new controller is built with high-quality Mitsubishi hardware that has been industrially proven. With millions of modules in the field in various applications, availability of spare parts anywhere in the world is not a problem.



**CTI Controller**