

REAL-20

ACCELERATED RELIABILITY TEST CHAMBER

The Most Price Effective, Technically Superior Accelerated Reliability Test Chamber on the Market

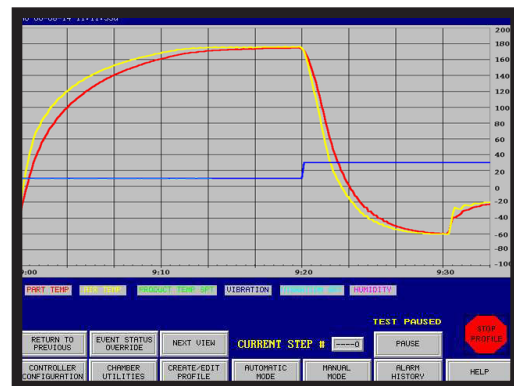


FEATURES

- Rapid thermal change rate (up to 60°C per minute on product)
- Tri-Axial, repetitive shock vibration system (20" x 20" table, up to 60 GRMS)
- Advanced insulation for thermal efficiency, sound deadening and reduced floor space
- Chart's color touch-screen controller provides easy operation and programming for the user
- Completely new design incorporates many performance improvements

TECHNICAL FEATURES

- Capable of monitoring up to 36 auxiliary thermal couples and 40 accelerometer inputs
- Multiple safety devices are interlocked such that heat, liquid nitrogen and vibration are inhibited when any of the safeties are activated
- Optional software for chamber operation and data logging from a PC with web based control



Color Touch-Screen Controller



Innovation. Experience. Performance.®

REAL-20

ACCELERATED RELIABILITY TEST CHAMBER

System Specifications

Temperature Range	+200°C to -100°C (+392°F to -148°F)
Temperature Change Rate	Up to 60°C per minute for temperature range of +85°C to -65°C on the product depending on the mass, volume, fixturing and other physical characteristics of the product.
Vibration Range	Up to 60 GRMS on table. This GRMS specification is calculated based on a cut-off frequency of 5000 Hz. This same calculation method is the basis of the GRMS number displayed by the CTI control system.
Cooling	Direct nitrogen atomization in plenum. The system includes a control solenoid valve and a redundant safety solenoid valve.
Vibration Table	20" x 20" surface with 3/8-16" mounting inserts.
Heaters	Open element nichrome type for low thermal mass and quick response.
Exciters	Pneumatically actuated hammers, each with adjustable ball valves, which generate six degrees of freedom, non-coherent, broad band excitation.
Vibration Table Maximum Payload	200 lbs.
Doors	Front opens to 95° for easy access.
Door Interlocks	Inhibit thermal and vibration systems when any door is ajar.
Windows	10" x 10" multi-pane viewing on each door.
Access Port	One 6" port with hinged phenolic cover and foam port plug.
Control	Chart's CTI color touch-screen controller, PLC based.
Channels	Temp: Plenum Temp, Product Temp, (2) auxiliaries (standard). Vibration: Table Control, (3) auxiliaries (standard).
Software Programs (optional)	Chart SCADA Package allows operating the chamber and logging data from a PC.
Interior Workspace Dimensions	24" w x 24" d x 24" h.
Exterior Dimensions	47" w x 35" d x 81" h.
Weight	900 lbs.
Power Requirements	460 VAC, 3 Phase, 30A Service.
Main Power Disconnect Switch	Rated at 50,000 AIC at 480 VAC, with lock-out capability.
Compressed Air	1/2" supply, 90 psig, 50 SCFM, 5.5 barg, 1.42 m ³ /min.
Exhaust	One 4"/10.2 cm port.
LN₂ Connection	3/8" FPT.

- All specifications are subject to change without notice.

- Thermal only model available.

- Asia power requirements available.