

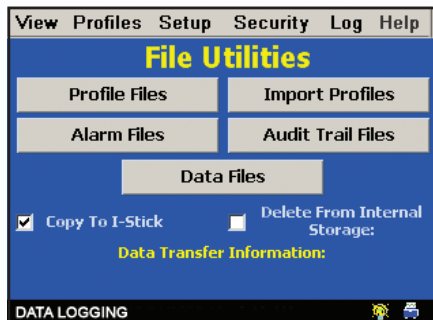
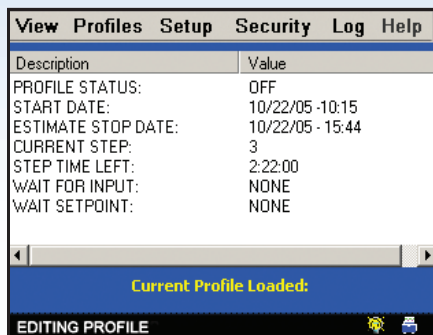
CSZ EZT-560 Touch Screen Controller

Flexibility... Packed with Features

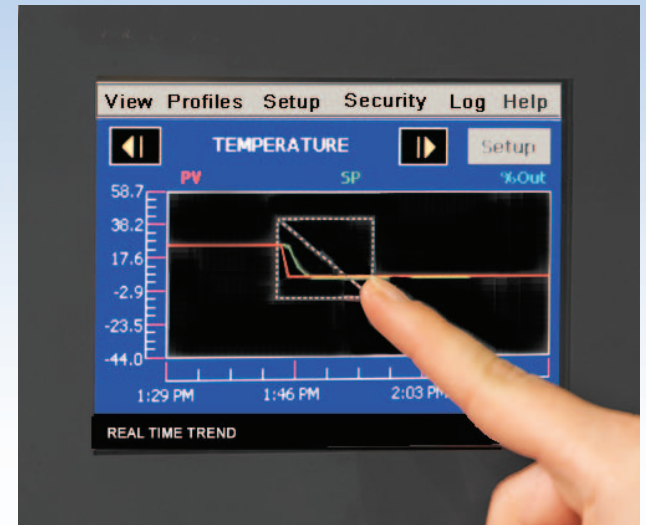
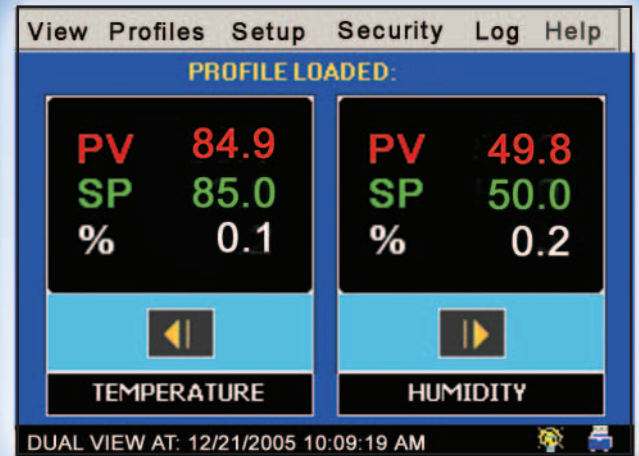
CSZ's EZT-560 controller offers the latest in test chamber programming. Flexible configurations along with a full range of user-friendly features combine to simplify programming and save valuable time for greater return on your investment. The EZT-560 intuitive controller includes built-in safeties to protect your chamber and product under test.

User Convenience

- Real time & historical trend graphs with the drag-n-zoom feature provides the ability to touch and zoom into specific areas of the graph saving time.
- Print real time and historical trend graphs directly to a printer with a touch of an icon, eliminating the need for a chart recorder.
- On-line help provides menu specific information for user convenience.

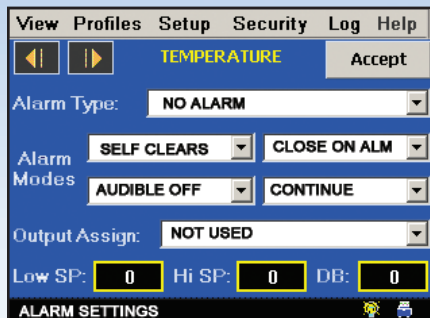
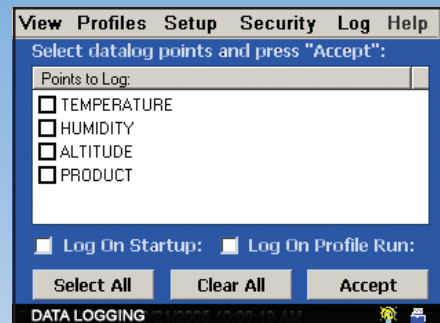


- Profile status view provides detailed information on the profile running including the estimated stop date and time.
- Profile autostart and "wait for" functions.
- Easily download profiles, alarm files, audit trail files and data files to a removable I-stick via USB port. Also imports profiles via removable I-stick for easy transfer among multiple chambers.
- Access alarm history files and view detail for troubleshooting.
- System monitor displays run time and cycles of all major components.
- Wireless compatibility using web-enabled, hand-held devices.
- Computer Interface
 - o EIA-232/485 Serial Communications
 - o Ethernet Connectivity
 - o GPIB (IEEE-488) Optional
- Featured Software
 - o Monitor and control up to 20 chambers from any location with CSZ's EZ-View software



Flexibility

- Data logging capabilities including user selectable points as well as number of days the data log file will span with log during profile run or continuous logging options.
- Fully configurable alarm settings for all inputs with ability to assign alarms to control optional customer event outputs.
- Configurable maintenance messages and audible alarms alert the user when chamber systems are due to be maintained.
- Full system security allows up to 30 different users with three different levels of security.
- Audit trail tracks changes in settings by each user.



Enhanced Functionality

- 6" Color touch screen with windows-based menu navigation.
- Unlimited profiles with up to 99 steps each.
- Enhanced profile entry allows user to enter time in HH:MM:SS.
- Adapt-a-tune technology provides the ultimate in chamber performance and control stability.
- Intuitive programming includes built-in safeties to protect your investment.
- Product control feature accelerates temperature cycling of the device under test via Cascade Control.
- Product high/low limit protects your device under test.
- Selectable power failure/recovery options provided for chamber recovery in the event of a power failure.
- Monitor option provides up to 8 inputs for monitoring with individual alarms, displays, and data logging for each input.