

NEW Z-Plus Chambers

*Reliability You Expect
Features You Want
Value You Need*

Designed for ease-of-use and reliability this new line of chambers incorporates customer-requested features and extended performance for faster ramp rates.



Standard Features include:

- Touch Screen Controller w/ Disk Storage
- RS-232/485 Computer Interface
- 3" Access Port
- Casters
- One-Handed Latch
- Fog-Free Viewing Window
- Interior Light
- Adjustable Shelf
- Leveling Legs
- Easily Removable Access Panels
- Top Vented Exhaust to reduce noise and exhaust heat away from workspace.
- Hinged Control Platform may be in the open position for programming or closed position when not in use.

Z-PLUS SPECIFICATIONS

Size:	8, 16, 32 CU FT of Workspace
Temperature Ranges:	Single Stage: -34°C to +190°C Tundra™: -45°C to +190°C Cascade: -73°C to +190°C
Humidity Range: Optional Range:	10% to 98% RH 5% to 98% RH

CSZ
Cincinnati Sub-Zero

10211 Mosteller Road
Cincinnati, Ohio 45241
Ph. 513-772-8810
indsales@cszinc.com
www.cszinc.com

**ISO-9001
CERTIFIED**

Built for Reliability and Ease-of-Use

Choose from a large variety of Standard and Custom Options for Flexibility and increased Performance not found in other competitive models

Standard Options	Custom Options
Dry Air Purge Recirculating Water Supply System Spare Demineralizer Cartridges LN2 Boost Cooling Low RH Option Water Cooled Condenser	CO2 Boost Cooling CO2 Cooling Only LN2 Cooling Only GN2 Purge Heat Only
Running Time Meter Event Relays for Controller IEEE-488 Computer Interface Windows-Based Software: Watview Main Power Disconnect Chart Recorder	Extra Heat for Faster Transitions Temperature Limited Sheathed Heaters Extended Temperature Range up to 200°C Temperature Controlled Door Lock Main Power Cord
Circular Ports Square Ports Cable Notch Additional Shelves Sound Deadening Package	Reinforced Chamber Floor Reinforced Shelf Stainless Steel Exterior Opposite Swing Door Glove Ports

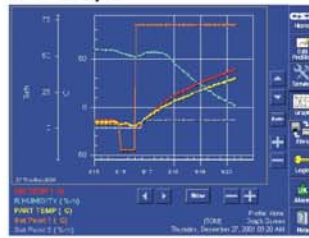
Includes the NEW CSZ TS-540 Touch Screen Interface

The TS-540 Interface is not another new controller, it is an easy to use touch screen interface with a computer that utilizes Microsoft Windows NT.

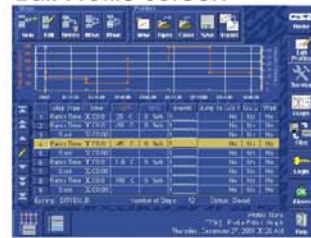
Main Default Screen



X-Y Graph



Edit Profile Screen



Features

- Watlow Controller with 10.5" Color Touch Screen
- Unlimited profile capability with up to 256 steps each
- X-Y Graph displays profile with real time data
- On-Screen Help
- Data Logging
- 3.5" Disk Storage
- Web Server
- History of all Keystrokes



**ISO-9001
CERTIFIED**

10211 Mosteller Road
 Cincinnati, Ohio 45241
 Ph. 513-772-8810
 indsales@cszinc.com
 www.cszinc.com

Built for Reliability and Ease-of-Use