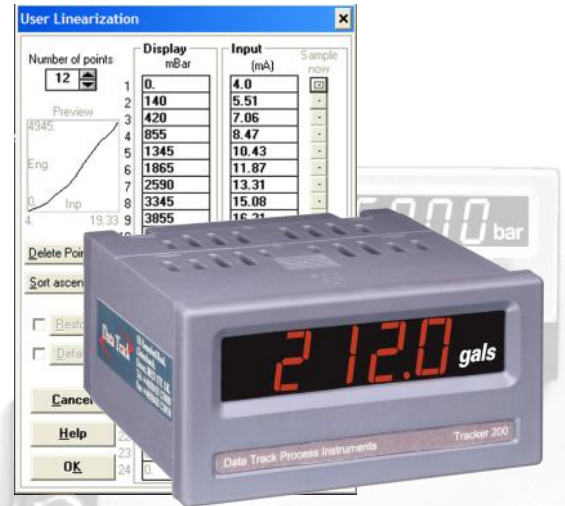
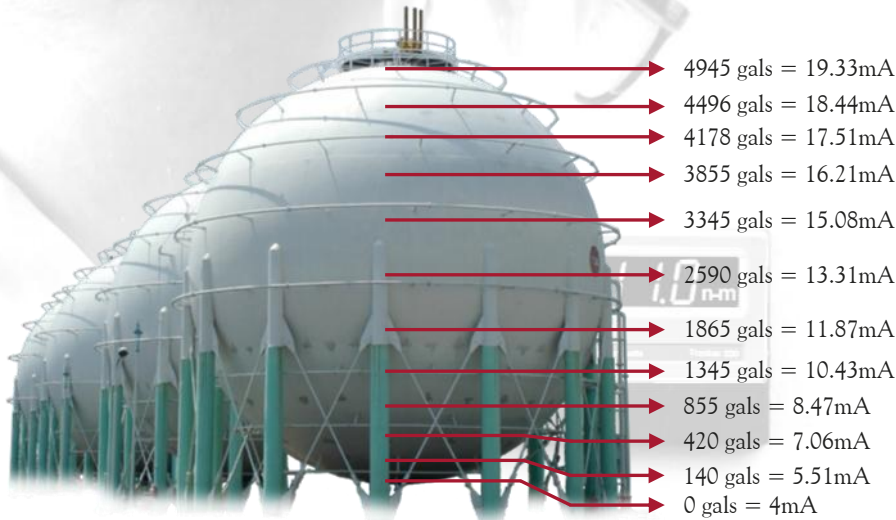


Tracker 212 Universal 5-Digit, Low Cost, Tank Contents, Process and Temperature Indicator



The new Tracker 212 is an all-in-one, attractively designed and priced unit. It has been engineered as a universal process and temperature indicator with user linearization features for 4-20mA signals.

- Low Cost with a 5 Year Warranty
- Quick and Easy to Configure
- 24-Point User Linearization For 4-20mA Signals
- Universal Process or Temperature Measurement
- Sensor Excitation For Transducers (10V) or Two Wire Transmitters (24V)
- Selectable Degrees F or C
- Display Scaling To Any Engineering Units
- 12-32 VDC/VAC Powered Version Option
- Universal Mains Power Input (110-250VAC)
- Scalable Isolated Analog Output Option
- PC Programming Option
- Alarm Relay Fitted As Standard
- 2nd and 3rd Alarm Outputs Option
- No Internal Pots, Links or Plug In Cards
- Accepts mV, mA, V, Ω Signals Plus Type J, K, N, T, R, S Thermocouples and PT100



TANK CONTENTS AND PROCESS MEASUREMENT

The Tracker 212 can accept mV, 10 volt and 4-20mA signals from a sensor. Up to 24 user linearization points can be entered in any order corresponding to the 4-20mA signals. A regulated 10VDC excitation supply is provided for "bridge" type sensors and a 24VDC supply for two wire transmitters and active sensors.



TEMPERATURE MEASUREMENT

The Tracker 212 can be wired directly to thermocouple, RTD's or temperature transmitters.

Select the correct thermosensor type from the menu and the input is automatically scaled and linearized. Temperature is user selectable for display in °F or °C and for a resolution of 0.1° or 1.0°.

OUTPUTS

The T212 is fitted with a relay output with volt free C/O contacts, as standard. The alarm can be high or low acting with user selectable hysteresis and with the relay configurable to be energized or de-energized (fail safe) when in the alarm condition. Two further alarm relays can be fitted as an option.

The analog output option gives an isolated 4-20mA signal, which is scalable to any portion of the display range. The output is linear to the displayed value, not the input. This makes the Tracker 212 an ideal tank contents transmitter.

