

Universal load cell for all static and dynamic applications in the areas of industrial testing, experimental mechanics and assembly testing.

FEATURES:

- Strain gage principle
- Extremely low weight
- Small, robust universal transducer
- Simple mounting, high reliability
- Convincing price-performance ratio
- Numerous adaptations possible

SPECIFICATIONS:

Nominal sensitivity (tension/compression)	C nom	mV/V	2
Class			0.1
Interpolation deviate	f _c	%	<0.1
Realtime output tolerance (compression)	D _c	%	<0.1
Relative zero balance	d _{s.o}	mV/V	±0.02
Relative Hysteresis	u	%	0.1
Relative creep (t _B =30min)	d _{crF,E}	%	<±0.05
Temperature effect per 10 K on: zero, in % ORL	T _{K0}	%	0.05
span	T _{KC}	%	0.1
Eccentricity effect per mm	d _E	%	0.05
Effect of lateral forces (10% F _{nom})	d _Q	%	0.1
Input impedance	R _e	Ohm	ca. 380
Output impedance	R _a	Ohm	ca. 350
Insulation impedance	R _{is}	Ohm	>2*10 ⁹
Reference excitation	U _{ref}	V	10
Maximum excitation	U _{e,max}	V	12
Nominal temperature	B _{t,nom}	° C	-10 to +70
Reference temperature	t _{ref}	° C	22 ±1
Service temperature range	B _{t,G}	° C	-20 to +85
Static Overload in % ORL	F _L	%	150
Static safe lateral force in % of capacity ¹⁾	F _Q	%	80
Ultimate static overload in % ORL ¹⁾	F _B	%	>300
Protection rating acc. to DIN VDE 0470-1			IP67
Permissible dynamic load range ¹⁾			2x F _{nom}

1) see also Lebow load diagrams

Model 3161-300 Force Transducer



ACCESSORIES AVAILABLE:

- Swivel Joints
- Threaded Bolts
- Load Buttons

Consult factory.

Lebow® Products Inc.

1728 Maplelawn Road • P.O. Box 1089
Troy, Michigan 48084-1089 USA

800 803-1164

Phone: +1 248 643-0220

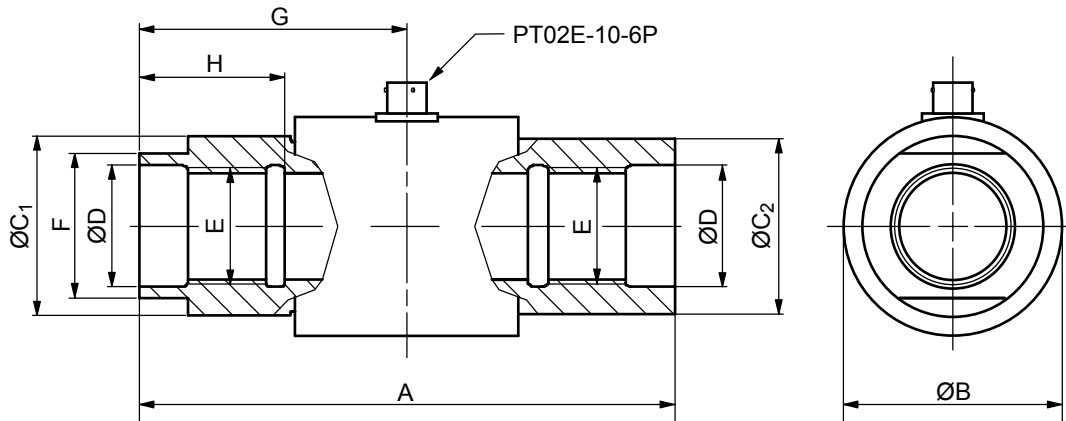
Fax: +1 248 643-0259

Email: lebowsales@lebow.com

Visit our web site!! www.lebow.com

Lebow® Products Inc.

DIMENSIONS:



Model 3161-300 Series							
Nominal capacity (tens./compr.)	±F nom	kN	20	50	100	200	500
Height	A	mm	94	110	155	185	270
Overall diameter	ØB	mm	38	45	70	85	125
Connection thread	E		M20x1.5	M24x2	M39x2	M48x2	M72x4
Diameter A/F-side	ØC1	mm	30	37	60	75	115
Diameter other side	ØC2	mm	29	36	59	74	113
Internal diameter	ØD	mm	21	25	40	50	74
Width across flats	F	mm	24	30	55	69	100
Cable entry position	G	mm	47	55	77.5	92.5	135
max. engagement length	H	mm	25	30	46	54	83
Tightening torque (oiled, =0.12)		Nm	75	250	750	1800	6800
Weight		kg	0.4	0.7	2.3	4.3	15
Nominal deflection		mm	0.04	0.07	0.09	0.12	0.21

Subject to change