

652 SINGLE POINT LOAD CELL



DESCRIPTION:

The 652 is an aluminium single point (moment insensitive) load cell.

The use of single point load cells eliminates the need for flexures and levers thus greatly simplifying scale design and reducing cost. The 652 load cell is suitable for a wide range of medium capacity platform scales, packaging machinery and general process weighing.

Full sealing ensures this product can be used in a variety of industrial applications.

This product meets the stringent Weights and Measures requirements throughout Europe.

FEATURES:

- Double epoxy sealing protection for damp environments
- Certified to OIML R-60, **3000d**
- Industry standard mounting configuration
- Moment insensitive, platform size to 900 x 900mm
- **CAPACITIES: 50 → 1000kg**

Revere  **Transducers Europe**

an SI Technologies company

Revere Transducers Europe

652: SPECIFICATIONS

Standard Capacities (=E _{max})	Kg	50, 75, 100, 150, 200, 250, 300, 500, 1000 ¹	
Accuracy Class According to OIML R-60		CC	C3
Max. Number of Verification Intervals (n _{ic})			3000
Minimum Verification Interval (v _{min})			E _{max} /10000
Accuracy According to Type Designation		CC	C3
Combined Error	%S	≤ ± 0.0500	≤ ± 0.0200
Non-Repeatability	%S	≤ ± 0.0200	≤ ± 0.0100
Minimum Dead Load Output Return ²	%S	≤ ± 0.0500	≤ ± 0.0167
Creep Error (30 Minutes) ²	%S	≤ ± 0.0600	≤ ± 0.0245
Creep Error (20-30 Minutes) ²	%S	≤ ± 0.0200	≤ ± 0.0053
Temp. Effect on Min. Dead Load Output	%S/5 °C	≤ ± 0.0250	≤ ± 0.0070
Temp. Effect on Sensitivity	%S/5 °C	≤ ± 0.0250	≤ ± 0.0040
Minimum Dead Load	%E _{max}	0	
Maximum Safe Over Load	%E _{max}	150	
Ultimate Over Load	%E _{max}	300	
Maximum Safe Side Load	%E _{max}	100	
Deflection at E _{max}	mm	≤ 1,22	
Excitation Voltage	V	5...12	
Maximum Excitation Voltage	V	18	
Rated Output (=S)	mV/V	2	
Tolerance on Rated Output	mV/V	≤ ± 0.2	
Zero Balance	%S	≤ ± 10	≤ ± 5
Input Resistance	Ω	445 ± 15	350 min.
Output Resistance	Ω	350 ± 3.5	
Insulation Resistance	MΩ	≥ 5000	
Compensated Temperature Range	°C	-10...+40	
Operating Temperature Range	°C	-30...+65	
Storage Temperature Range	°C	-40...+70	
Element Material		Aluminium Alloy	
Sealing (DIN 40.050 / EN 60.529)		IP65	
Eccentric load effect ³	%S	0.01	
Maximum Platform Size	mm	900x900 (600x600 for 1000kg version)	
Recommended Torque on Fixation Bolts	Nm	35 - 40	

¹ CC accuracy only

² Applies for the temperature range -10 to +40 °C

³ Measured with ½ Rated Load at 25% platform diameter.

Accuracy class C3 is in agreement with the OIML recommendation R-60. **Accuracy classes C1 and C2 are also available.**

Correct mounting of the load cells is essential to ensure optimum performance. The maximum platform sizes given are those recommended to ensure that (a) the system meets Weights and Measures requirements and (b) damage is not done to the load cell through excessive torque. Overload stops should be set with loads placed **within the recommended** platform size. Further information is available on request.

REVERE TRANSDUCERS EUROPE B.V.

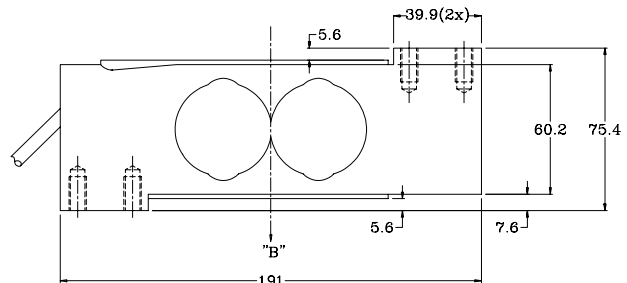
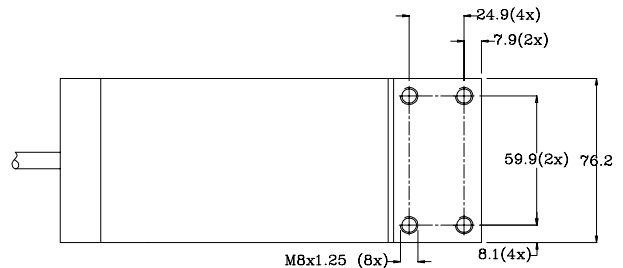
Ramshoorn 7
Postbus 6909, 4802 HX Breda
The Netherlands
Tel: (+31) 76-5480700
Fax: (+31) 76-5412854
E-mail: info@revere.nl

REVERE TRANSDUCERS INC.

14192 Franklin Ave
Tustin, CA 92780-7016
U.S.A.
Tel: (+1) 714.731.1234
Fax: (+1) 714.731.2019
E-mail: info@reveretransducers.com

REGIONAL OFFICE UK

The Business Centre
Edward Street, Redditch
Worcs B97 6HA, UK
Tel: (+44) 1527-65888
Fax: (+44) 1527-64888
E-mail: alittlejohn@revere.nl



Cable specifications:

Cable length 3m
Excitation + Red
Excitation - Black
Output + Green
Output - White
Sense + Blue
Sense - Brown
Shield Clear

B	Central Load Axis
All Threads M8x1,25 (15 Deep min.)	

Attention:

All dimension tolerances according to ISO 2768m, unless otherwise specified.

All specifications subject to change without notice

Cable screen is not connected to load cell body.