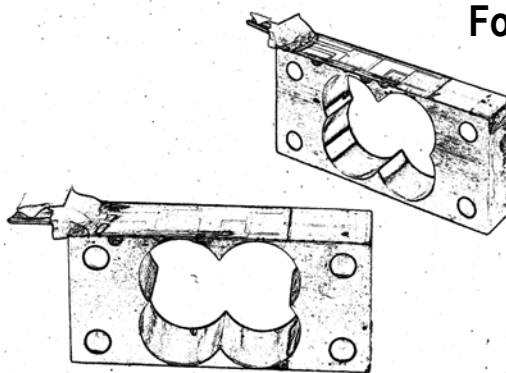


# Model FT50

## Force Sensor

- **Compact size**
- **Half bridge design reduces the number of interconnecting wires**
- **Bonded foil strain gauge design provides high reliability**
- **Full parallelogram design to minimize off-center load effects and improve accuracy**

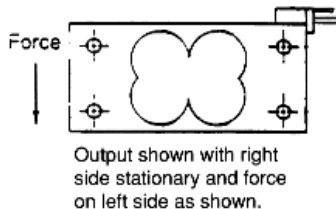
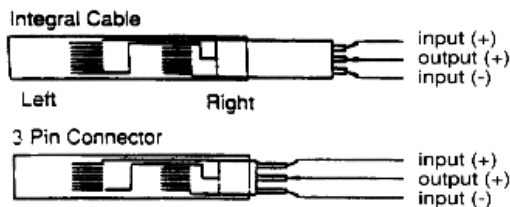
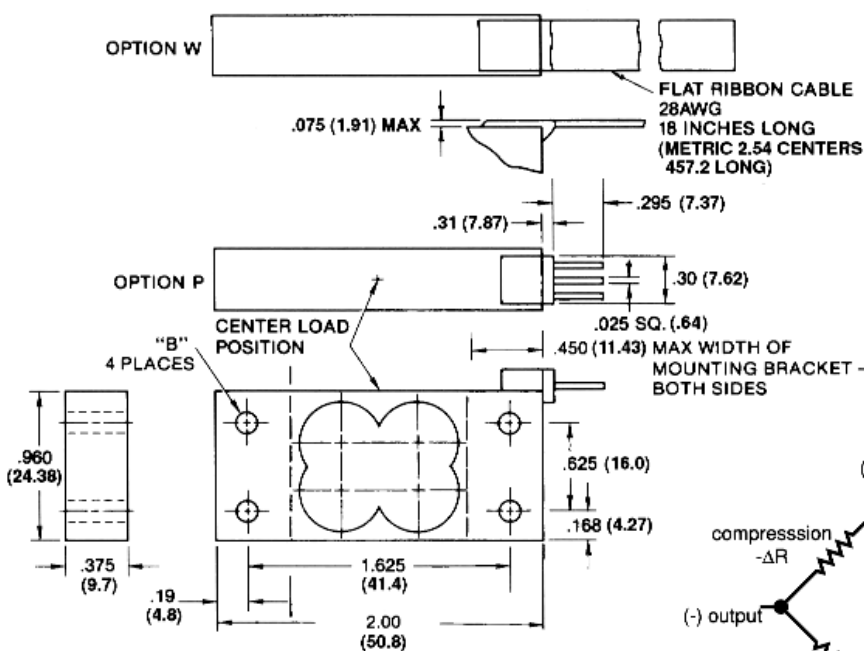


## specifications

Capacity (lb)	1.0, 2.0, 5.0, 10.0, 20.0	Hysteresis (% Rated Output)	±0.15
Excitation Voltage (Vdc or Vac <sub>rms</sub> )	10 recommended, 15 max.	Nonrepeatability (% Rated Output)	±0.05
Bridge Configuration	Active half bridge, adjacent arms	Temp. Coef.: Output (%FS/°F: 15° to 115°F)	±0.035
Resistance: Gage	500±50Ω	Temp. Zero.: Output (%FS/°F: 15° to 115°F)	±0.003
Resistance: Insulation (meg-ohm)	1000 min. @ 50Vdc	Temperature Range: Storage	-60 to 200°F
Gage Match	0.5 Ω	Temperature Range: Operating	-40 to 150°F
Nonlinearity (% Rated Output)	±0.15	Maximum Overload (% Rated Capacity)	200
Rated Output (mV/V @ 72°F)	1.0 - 2.0: 1.0±0.25; 5.0 - 20.0: 1.0±0.15	Safe Overload (% Rated Capacity)	150
Creep (% Load/5 min.)	0.10	Eccentric Load Effect (%FS Center Load) <sup>1</sup>	±1.0
Recommended Platform Size (in.)	1.0 - 2.0: 6x4; 5.0 - 20.0: 6x6	Deflection (FS Nom/lbs., in.)	1.0: 0.017; 2.0: 0.11; 5.0: 0.13; 10.0: 0.12; 20.0: 0.14

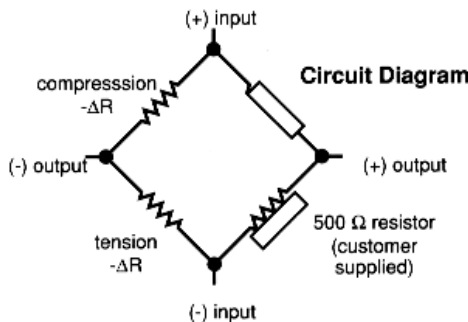
Dimensions in inches (millimeters).

NOTE: Specifications subject to change. Request certified drawings prior to designing mountings or fixtures.



### Electrical Termination:

Two basic termination options are offered: 3-pin connector or integral leads. Sensors are configured as a fully-active half bridge. The two strain gages are matched within 0.5 ohms.



### Wiring

+ Input	Red
- Input	Black
+ Output	White

Capacity	B
1 lb	0.120 (4.09)
2 lb	0.120 (4.09)
5 lb	0.120 (4.09)
10 lb	0.147 (5.01)
20 lb	0.147 (5.01)



**INTERTECHNOLOGY** INC. 1 Scarsdale Road  
Don Mills, Ontario  
M3B 2R2

Tel: 416-445-5500, Fax: 416-445-1170

E-Mail: [sales@intertechnology.ca](mailto:sales@intertechnology.ca)

ISO9001  
Certified