

## MODEL 65040W

STAINLESS STEEL, WELDED SEAL  
DOUBLE-ENDED SHEAR BEAM  
LOAD CELL

### APPLICATIONS

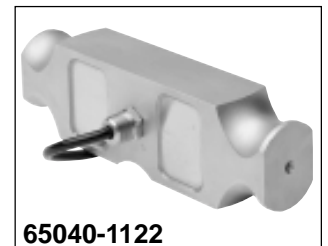
- Hostile environments
  - Food and beverage processing
  - Chemical and plastics processing
  - Pharmaceutical and biomedical processing
- Truck scales
- Railroad track scales

### FEATURES

- Rated capacities of 25,000 to 200,000 pounds
- Welded seal, stainless steel construction
- Center supported, end-link loaded
- Integral conduit adaptor
- Trade certified for NTEP Class III L:10,000 divisions
- **Sensorgage™** sealed to IP67 standards
- **Cell Guard™** Two Year Warranty
- Factory Mutual System Approved for Classes I, II, III;  
Divisions 1 and 2; Groups A through G.  
Also, **Non-Incendive** ratings (No Barriers!).
- ISO 9001 Certified manufacturing facilities



65040 Steel



65040-1122



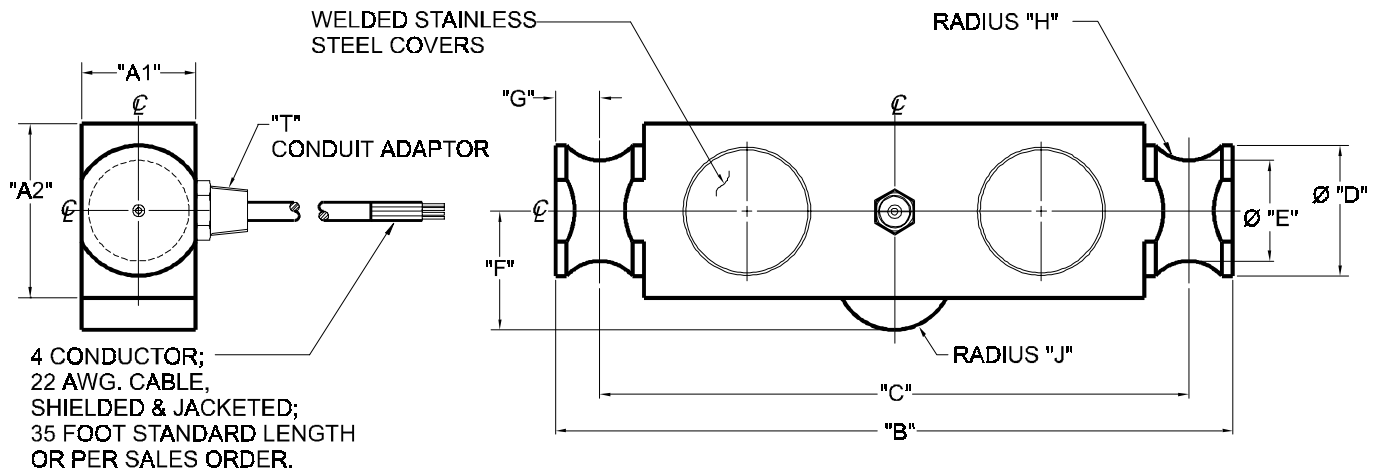
# Model 65040W Performance Specifications

Rated Capacities (lbs): 25K, 40K, 50K, 75K<sup>(1)</sup>

Full Scale Output (FSO): 3.0 mV/V ± 0.25%

Accuracy Class:	Standard	NTEP IIIIL
Max. No. Verification Intervals	--	10,000 Multiple
Combined Error % FSO	≤ .03	--
Non-Linearity % FSO	≤ .03	--
Hysteresis % FSO	≤ .02	--
Creep Error % FSO	≤ .03 in 20 minutes	--
Temperature Effect on:		
• Zero % FSO/°F	≤ 0.0015	--
• Output % of Load/°F	≤ 0.0008	--
Non-Repeatability % FSO	≤ .01	
Zero Balance % FSO	≤ 1.0	
Insulation Resistance	> 1000 Mohms at 50VDC	
Compensated Temperature Range	14° to 104°F / -10° to 40°C	
Operating Temperature Range	0° to 150°F / -18° to 65°C	
Storage Temperature Range	-60° to 185°F / -50° to 85°C	
Input Resistance	686-714 Ohms	
Output Resistance	699-707 Ohms	
Recommended Excitation Voltage	10-15 Volts DC	
Maximum Excitation Voltage	25 Volts DC	
Sideload Rejection Ratio	500:1	
Safe Sideload	100% of Rated Capacity	
Safe Overload	150% of Rated Capacity	
Ultimate Overload	300% of Rated Capacity	
Sealing	Meets IP67 Standards	
Material	17-4 PH Stainless Steel	

<sup>(1)</sup> Consult factory for higher capacities.



## WIRING

FUNCTION	COLOR
+ Excitation	Red
- Excitation	Black
+ Output	Green
- Output	White

CAPACITY	A1	A2	B	C	D	E	F	G	H	J	T	Weight
25K - 40K	1.94	2.44	8.25	7.25	2.00	1.63	1.75	0.50	0.50	0.50	1/4-18NPT	15.0
50K - 75K	1.94	2.94	11.50	10.00	2.20	1.70	2.00	0.75	0.75	1.00	1/2-14NPT	24.0

Dimensions are in inches. Capacities are in pounds. Specifications are subject to change. Certified drawings are available.