

MODEL 65092 TWA

TANK WEIGHING ASSEMBLY

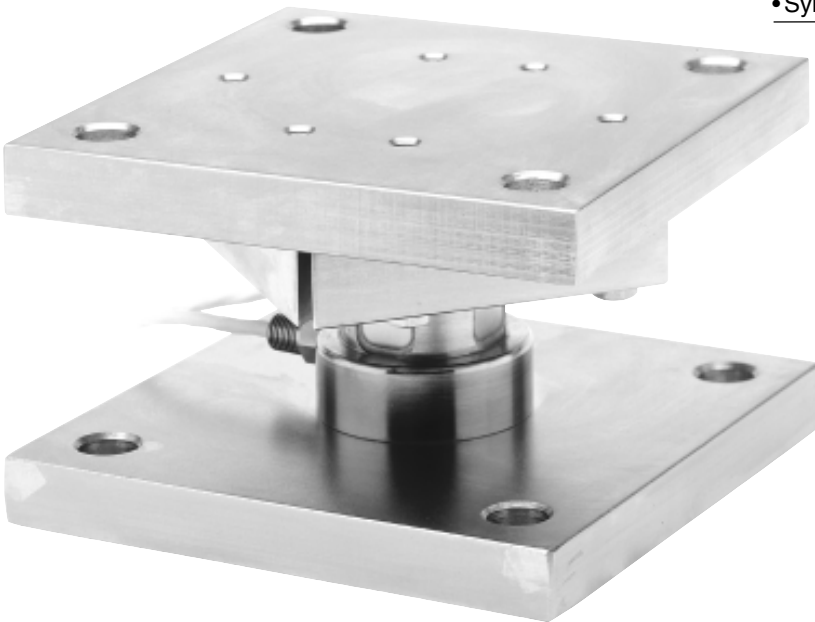
APPLICATIONS

- Tank, bin, and silo weighing
- Level and inventory monitoring
- High capacity weighing

FEATURES

- Capacity ranges of 50,000 to 1,000,000 pounds
- Mounts directly to foundation or structural support
- Self-checking with provisions for thermal expansion and contraction
- No check rods required
- Monolithic element design
- Exceptional sideload tolerance
- Load cells have matched outputs for multi-cell systems
- Low profile/low deflection
- Symmetrical mounting bolt pattern simplifies installation

- Integral conduit adaptor
- Exceeds structural requirements of Uniform Building Code Standards for Seismic Zones 1 and 2
- **Sensorgage™** sealed to IP67 standards
- **Cell Guard™** Two Year Warranty
- Factory Mutual System Approved for Classes I, II, III; Divisions 1 and 2; Groups A through G.
Also, **Non-Incendive** ratings (No Barriers!).
- ISO 9001 Certified manufacturing facilities



Model 65092 TWA Performance Specifications

Rated Capacities (lbs): 50K, 100K, 200K, 300K, 500K, 750K, 1M

Full Scale Output (FSO): 2.0 mV/V \pm 0.25%

Accuracy Class:

Standard

Combined Error % FSO

$\leq .10$

Non-Linearity % FSO

$\leq .07$

Hysteresis % FSO

$\leq .03$

Creep Error % FSO

≤ 0.03 in 20 minutes

Non-Repeatability % FSO

$\leq .01$

Zero Balance % FSO

≤ 1.0

Insulation Resistance

> 1000 Mohms at 50VDC

Temperature Effect on:

•Zero % FSO/ $^{\circ}$ F

≤ 0.0015

•Output % of Load/ $^{\circ}$ F

≤ 0.0008

Compensated Temperature Range

14 $^{\circ}$ to 104 $^{\circ}$ F / -10 $^{\circ}$ to 40 $^{\circ}$ C

Operating Temperature Range

0 $^{\circ}$ to 150 $^{\circ}$ F / -18 $^{\circ}$ to 65 $^{\circ}$ C

Storage Temperature Range

-60 $^{\circ}$ to 185 $^{\circ}$ F / -50 $^{\circ}$ to 85 $^{\circ}$ C

Input Resistance

400-500 Ohms

Output Resistance

349-355 Ohms

Recommended Excitation Voltage

10 Volts DC

Maximum Excitation Voltage

18 Volts DC

Safe Sideload

30% of Rated Capacity

Safe Overload

150% of Rated Capacity

Ultimate Overload:

•Compression

300% of Rated Capacity

•Tension

100% of Rated Capacity

Sealing

Meets IP67 Standards

Material:

Alloy Tool Steel or Stainless Steel
Steel

•Load Cell

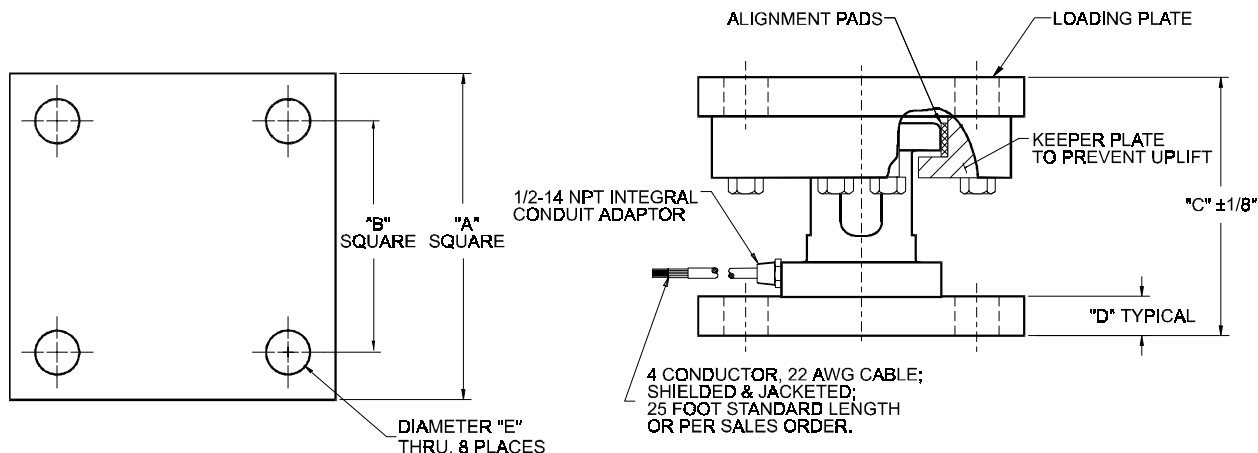
•Assembly

Finish:

Electroless Nickel Plated
Zinc Plated

•Load Cell

•Assembly



WIRING

FUNCTION	COLOR
+ Excitation	Red
- Excitation	Black
+ Output	Green
- Output	White

CAPACITY	A	B	C	D	E	Weight
50K	8.00	6.00	5.13	0.94	0.78	200.0
100K	10.00	7.50	7.38	1.19	1.12	200.0
200K	12.00	8.50	9.50	1.44	1.63	200.0
300K	14.00	9.50	11.00	1.94	1.63	320.0
500K	17.00	12.00	12.63	2.44	2.13	560.0
750K	24.00	16.50	21.75	3.90	3.50	2,000.0
1M	24.00	16.50	21.75	3.90	3.50	2,000.0

Dimensions are in inches. Capacities are in pounds. Specifications are subject to change. Certified drawings are available.