

MODEL 65094

TANK WEIGHING ASSEMBLY

APPLICATIONS

- Tank, bin and silo weighing
- Level and inventory monitoring
- High capacity loading

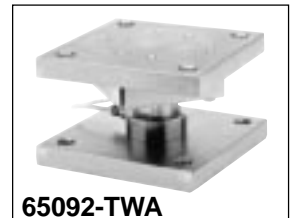
FEATURES

- Rated capacities of 50,000 to 1,000,000 pounds
- Monolithic element design
- Exceptional sideloading tolerance
- Integral conduit adaptor
- Compatible with Model 65092-TWA Weigh Module
- **Sensorgage™** sealed IP67 standards
- **Cell Guard™** Two Year Warranty
- Factory Mutual System Approved for Classes I, II, III;

Divisions 1 and 2; Groups A through G.

Also, **Non-Incendive** ratings (No Barriers!).

- ISO 9001 Certified manufacturing facilities



ISO
9001

Factory
Mutual
System
Approved



65092-TWA

Model 65094 Performance Specifications

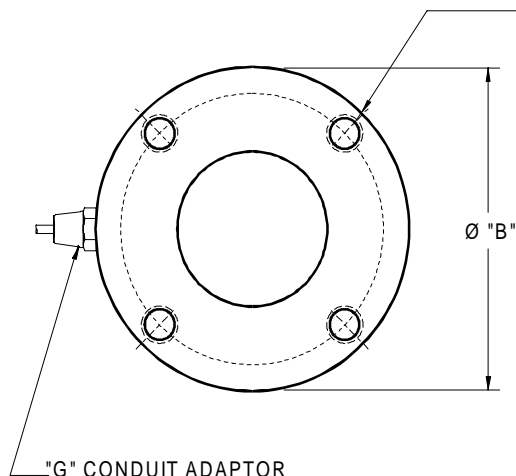
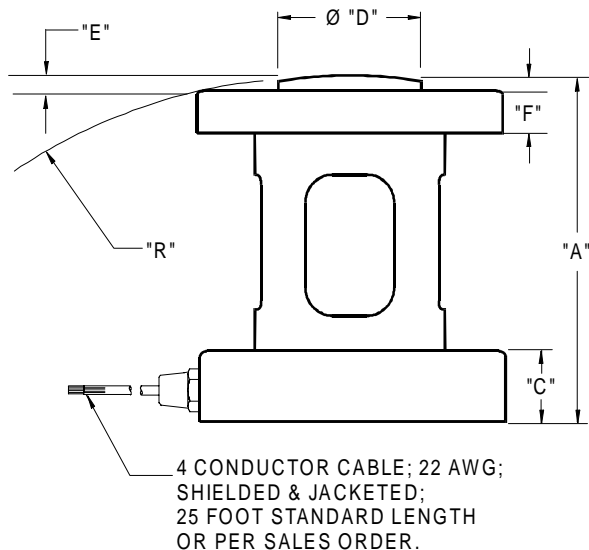
Rated Capacities (lbs): 50K, 100K, 200K, 300K, 500K, 750K, 1M

Full Scale Output (FSO): 2.0 mV/V ± 0.25%

Accuracy Class:

Standard

Combined Error % FSO	≤ .10
Non-Linearity % FSO	≤ .07
Hysteresis % FSO	≤ .03
Creep Error % FSO	≤ 0.03 in 20 minutes
Non-Repeatability % FSO	≤ .01
Zero Balance % FSO	≤ 1.0
Insulation Resistance	> 1000 Mohms at 50VDC
Temperature Effect on:	
•Zero % FSO/°F	≤ 0.0015
•Output % of Load/°F	≤ 0.0008
Compensated Temperature Range	14° to 104°F / -10° to 40°C
Operating Temperature Range	0° to 150°F / -18° to 65°C
Storage Temperature Range	-60° to 185°F / -50° to 85°C
Input Resistance	400-500 Ohms
Output Resistance	349-355 Ohms
Recommended Excitation Voltage	10 Volts DC
Maximum Excitation Voltage	18 Volts DC
Safe Sideload	30% of Rated Capacity
Safe Overload	150% of Rated Capacity
Ultimate Overload	300% of Rated Capacity
Sealing	Meets IP67 Standards
Material	Alloy Tool Steel
Finish	Electroless Nickel Plated



WIRING

FUNCTION	COLOR
+ Excitation	Red
- Excitation	Black
+ Output	Green
- Output	White

CAPACITY	A	B	C	D	E	F	R	T	G	Weight
50K	3.25	2.88	1.00	1.25	0.19	0.44	6.00	3/8-24 x .40 DP on a 2.13 B.C.	1/4-18 NPT	4.0
100K	5.00	3.94	1.25	2.31	0.25	0.75	6.00	1/2-20 x .88 DP on a 3.13 B.C.	1/2-14 NPT	11.0
200K	6.63	5.94	1.50	3.00	0.25	0.87	17.00	3/4-16 x .88 DP on a 5.00 B.C.	1/2-14 NPT	25.0
300K	7.00	5.94	1.75	3.00	0.25	1.00	17.00	3/4-16 x .88 DP on a 5.00 B.C.	1/2-14 NPT	25.0
500K	7.75	7.94	2.00	5.56	0.50	1.25	30.00	1-1/4-16 x 1.40 DP on a 6.00 B.C.	1/2-14 NPT	35.0
750K	12.00	10.94	3.00	5.97	0.50	2.00	50.00	1-1/2-12 x 2.0 DP on a 8.00 B.C.	1/2-14 NPT	50.0
1M	12.00	10.94	3.00	5.97	0.50	2.00	50.00	1-1/2-12 x 2.0 DP on a 8.00 B.C.	1/2-14 NPT	50.0

Dimensions are in inches. Capacities are in pounds. Specifications are subject to change. Certified drawings are available.



1 Scarsdale Road, Don Mills, ON M3B 2R2
 Tel: 416-445-5500, Fax: 416-445-1170
 Toll Free: 1-800-465-1600
 E-Mail: sales@intertechnology.ca