

LOW HEIGHT COLUMN 2029/2030 SERIES FORCE TRANSDUCERS

FEATURES

- Sealed for Environmental Protection
- Water Immersion to 300 ft.
- Integral Cable
- External Male Threads
- 5pt Tension & Compression Calibration
- Proprietary Modulus Compensated Strain Gages
- Optional Female Thread
- Metric Capacities Available- Consult Factory



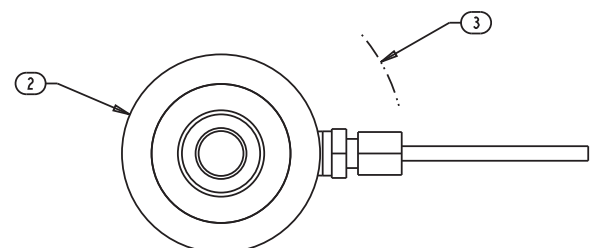
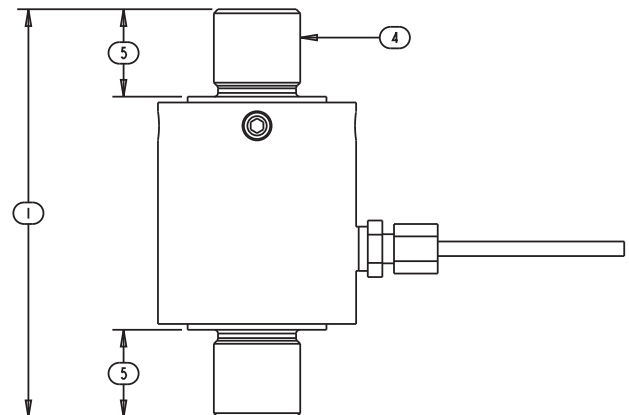
Note: shown with Optional Female Threads.

SPECIFICATIONS

Model	2029	2030
Capacity U.S. lbf.	500, 1000, 5K	2.5K, 5K, 7.5K
PARAMETERS		
ACCURACY		
Static Error Band, % Rated Output	+/-0.250	+/-0.250
Nonlinearity, % Rated Output	+/-0.250	+/-0.250
Hysteresis, % Rated Output	+/-0.150	+/-0.150
Nonrepeatability, % Rated Output	+/-0.050	+/-0.050
Creep, % in 20 minutes	+/-0.030	+/-0.030
Zero Balance, % Rated Output	+/-1.0	+/-1.0
TEMPERATURE		
Range, Compensated, °F	+15 to +115	+15 to +115
Range, Compensated, °C	-10 to +45	-10 to +45
Range, Operating, °F	-65 to +200	-65 to +200
Range, Operating, °C	-55 to +90	-55 to +90
Effect on Sensitivity, % Rdg/ °F	+/-0.0015	+/-0.0015
Effect on Sensitivity, % Rdg/ °C	+/-0.0027	+/-0.0027
Effect on Zero, % Rated Output/ °F	+/-0.0015	+/-0.0015
Effect on Zero, % Rated Output/ °C	+/-0.0027	+/-0.0027
ELECTRICAL		
Rated Output, mV/V, Nominal	1	1
Excitation Voltage, VDC Maximum	15	15
Input Resistance, Ohms	1000 +100/-10	1000 +100/-10
Output Resistance, Ohms	1000 +100/-10	1000 +100/-10
Insulation Resistance, Megohm	5000 (@ 50VDC)	
MECHANICAL		
Safe Overload Range, % Rated Capacity	+/-150	+/-150
Weight lb	0.7	0.8
Flexure Material	Stainless Steel	Stainless Steel

DIMENSIONS

Model	2029	2030
Capacity	500, 1000, 5K lbf	2.5K, 5K, 7.5K lbf
Dimensions	inch	inch
1.	3.50	3.50
2.	1.70	1.70
3.	R 1.57	R 1.57
4.	5/8-18	3/4-16
5.	.75	.75



© 2011 Tovey Engineering, Inc.