

"S" TYPE LOAD CELLS

PREMIUM "S" CELL (SSC) SERIES FORCE TRANSDUCERS

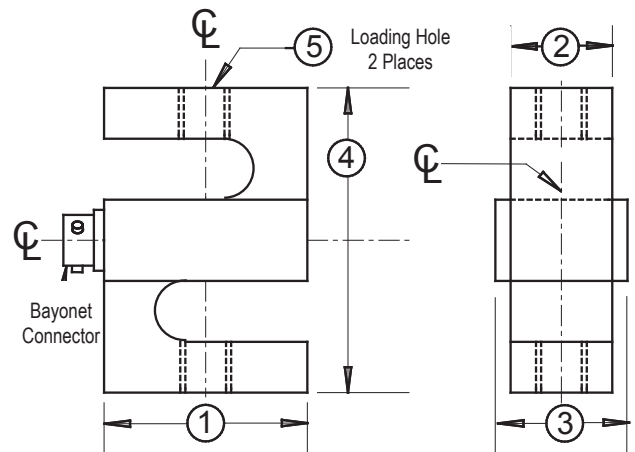
FEATURES

- Premium Version of the Standard "S" Cell
- Designed for the Test Measurements Market
- In-Line Loading
- Sealed for Environmental Protection
- Integral Connector or Cable



SPECIFICATIONS

PARAMETERS	MODEL	
	SSC CAPACITY (lbf) 50, 100, 250	SSC 500, 1K, 2K 3K, 5K
Accuracy		
Zero Balance, % R.O.	+/- 1.0	+/- 1.0
Non linearity, % R.O..	+/- 0.03	+/- 0.03
Hysteresis, % R.O.	+/- 0.03	+/- 0.03
Non-Repeatability, % R.O.	+/- 0.01	+/- 0.01
Static Error Band, % R.O.	+/- 0.03	+/- 0.03
Creep, % Reading in 20 Minutes	+/- 0.03	+/- 0.03
Temperature		
Range, Compensated, °F	+15 to +115	+15 to +115
Range, Operating, °F	-65 to +200	-65 to +200
Effect on Sensitivity, % Rdg/100 °F	0.08	0.08
Effect on Zero, %R.O./100 °F	0.15	0.15
Electrical		
Excitation Voltage, Recommended, Vdc	10	10
Input resistance, Ohms	350 +40/-3.5	350 +40/-3.5
Output Resistance, Ohms	350 +/- 3.5	350 +/- 3.5
Sensitivity (Rated Output), mV/V, Nominal	3	3
Insulation Resist., Bridge/Case, Meg Ohm	5000 (@ 50 VDC)	5000 (@ 50 VDC)
Mechanical		
Safe Overload Range, % R.O.	150	150
Flexure Material	Aluminum	Stainless Steel



DIMENSIONS

CAPACITY	in inches				
	1	2	3	4	5
50	2.00	.50	0.83	2.50	¼ - 28 UNF-2B
100	2.00	.50	0.83	2.50	¼ - 28 UNF-2B
250	2.00	.50	0.83	2.50	¼ - 28 UNF-2B
500	2.00	1.00	1.33	3.00	½ - 20 UNF-2B
1K	2.00	1.00	1.33	3.00	½ - 20 UNF-2B
2K	2.00	1.00	1.33	3.00	½ - 20 UNF-2B
3K	2.00	1.00	1.33	3.00	½ - 20 UNF-2B
5K	2.50	1.50	1.83	3.50	5/8 - 18 UNF-2B

OPTIONS

- Dual bridge
- Output adjustment to standard
- Special connector
- Integral cable

ACCESSORIES

- Mating connector
- Loading fixtures
- Interconnect cable
- Shunt calibration resistor
- Instrumentation

TOVEY ENGINEERING

INTERTECHNOLOGY
INC.
1-800-465-1600

1 Scarsdale Road
Don Mills, Ontario
M3B 2R2

Tel: 416-445-5500
Fax: 416-445-1170
E-Mail: sales@intertechnology.ca