

SHEAR WEB LOAD CELLS

SHEAR WEB PRECISION (SWP) SERIES FORCE TRANSDUCERS

FEATURES

- High Accuracy Version of SW Series
- Low Height
- Smaller Guaranteed Maximum Off-Center Load and Moment Error than SW Series
- Static Error Band .02-.04%
- Low Creep
- Low Sensitivity to Magnetic Fields
- Barometric Pressure Compensation
- Temperature Compensated
- Output to 4 mV/V



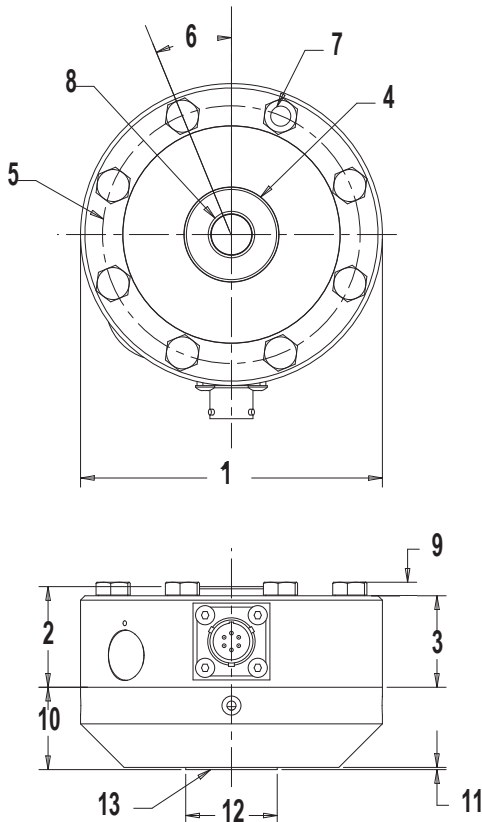
SPECIFICATIONS

PARAMETERS	MODEL			
	SWP10 300, 500, 1K, 2K	SWP10 CAPACITY (lbf) 5K, 10K	SWP20 25K, 50K	SWP30 100K
Accuracy				
Static Error Band, % R.O.	+/-0.02	+/- 0.03	+/- 0.04	+/- 0.04
Non linearity, % R.O..	+/-0.03	+/-0.03	+/- 0.03	+/- 0.03
Hysteresis, % R.O.	+/-0.02	+/-0.04	+/-0.04	+/-0.04
Non-Repeatability, % R.O.	+/- 0.01	+/- 0.01	+/- 0.01	+/- 0.01
Creep, % Reading in 20 Minutes	+/- 0.03	+/- 0.03	+/- 0.03	+/- 0.03
Off-Center Load Sensitivity, % /inch	+/- 0.10	+/- 0.10	+/- 0.10	+/- 0.10
Side Load Sensitivity, %	+/- 0.10	+/- 0.10	+/- 0.10	+/- 0.10
Zero Balance, % R.O.	+/- 1.0	+/- 1.0	+/- 1.0	+/- 1.0
Temperature				
Range, Compensated, °F	+15 to +115	+15 to +115	+15 to +115	+15 to +115
Range, Operating, °F	-65 to +200	-65 to +200	-65 to +200	-65 to +200
Effect on Sensitivity, % Rdg/100 °F	0.08	0.08	0.08	0.08
Effect on Zero, %R.O./100 °F	0.08	0.08	0.08	0.08
Electrical				
Excitation Voltage, Recommended, Vdc	10	10	10	10
Input resistance, Ohms	350 +40/-3.5	350 +40/-3.5	350 +40/-3.5	350 +40/-3.5
Output Resistance, Ohms	350 +/- 3.5	350 +/- 3.5	350 +/- 3.5	350 +/- 3.5
Sensitivity (Rated Output), mV/V, Nominal	2	4	4	4
Insulation Resist., Bridge/Case, Meg Ohm	5000 @ 50 VDC	5000 @ 50 VDC	5000 @ 50 VDC	5000 @ 50 VDC
Mechanical				
Safe Overload Range, % R.O.	150	150	150	150
Weight (lbs.)	1.0	2.9	9.1	23.5
Weight w/Base (lbs.)	2.5	6.5	21.5	52.5
Flexure Material	Aluminum	Steel	Steel	Steel

SHEAR WEB LOAD CELLS

DIMENSIONS

Review Drawing	MODEL			
	SWP10	SWP10	SWP20	SWP30
	CAPACITY (lbf)			
	300, 500, 1K, 2K	5K, 10K	25K, 50K	100K
1-CELL & BASE DIAMETER	(in inches) 4.12	4.12	6.06	8.00
2-CELL HEIGHT TO HUB	1.38	1.38	1.75	2.50
3-CELL BODY HEIGHT	1.25	1.25	1.63	2.25
4-HUB DIAMETER	1.29	1.29	2.34 25K/2.58 50K	3.76
5-MOUNTING B.C. DIAMETER	3.50	3.50	5.13	6.50
6-SYMMETRIC B.C. OFFSET	22.5 Degrees	22.5 Degrees	15 Degrees	11.25 Degrees
7-MTG. HOLE DIAMETER	0.28	0.28	0.41	0.53
8-HUB THREAD	1/2 - 20. 1.12 Dp.	5/8 - 18. 1.12 Dp.	1 1/4 - 12. 1.50 Dp.	1 3/4 - 12. 2.20 Dp.
9-BOLT HEAD PROTRUSION	0.20	0.20	0.30	0.4
10-BASE THICKNESS. TOTAL	1.13	1.13	1.75	2.00
11-BASE STEP HEIGHT	0.03	0.03	0.03	0.03
12-BASE STEP DIAMETER	1.25	1.25	2.25	3.00
13-BASE THREAD	1/2 -20. .88 Dp	5/8 -18. .88 Dp	1 1/4 - 12. 1.50 Dp.	1 3/4 - 12. 1.75 Dp.



OPTIONS

- Additional bridges
- Output adjustment to standard
- Compression overload protection
- Integral cable
- Custom connectors

ACCESSORIES

- Mating connector
- Loading fixtures
- Interconnect cable
- Shunt calibration resistor
- Instrumentation

INTERTECHNOLOGY
INC.
1-800-465-1600

1 Scarsdale Road, Don Mills, ON M3B 2R2
Tel: 416-445-5500, Fax: 416-445-1170
E-Mail: sales@intertechnology.ca