

LD517 OPERATIONAL MANUAL

Rev 1.03-00-DE
DEC. 2006

FRONT PANEL

HOLD

Turns on whichever the following status applies :

- While weight display is held.
- When hold signal is entered into terminal of rear panel.
- When indicator is hold mode in the indicator display mode.

ADD

Turns on when LD517 is adding in the adding mode or in the accumulative mode.

STB

Turns on whenever indicator status is stable (MD) in the indicator display mode. (But, some indicators are turns on when they are unstable. See Note)

ZALM

Turns on whenever indicator status is ZeroAlarm (ZALM) in the indicator display mode.

ZT

Turns on whenever indicator status is Zero Tracking (ZT) in the indicator display mode.

×10

Turns on whenever top 7 figures are displayed despite 8 figures should be displayed.

UNIT DISPLAY

UNIT of weight is displayed from g / kg / t / lb / NON
Please see the explanation of rear panel as to how to select unit.

Notes

Depending on indicator, STB is turns on when its status is unstable.

The following list shows the relation between stability and turns on of STB for each indicator :

Turns on in stable status	Turns on in unstable status
F800, F850, F700, F750, F276, F272	F280, F252, F270II F360 series

ERROR

Turns on :
When indicator, to which LD517 is Adding / accumulative mode, is in the status of error message.

Blink :

When normal signal is not entered from the signal line of SI/F or SI/FIL

G

Turns on whenever the readout is displaying a measured gross weight in the indicator display mode.

N

Turns on whenever the readout is displaying a net weight in the indicator display mode.

T

Turns on whenever the readout is displaying tare weight or while tare is subtracted in the indicator display mode.



Turns on whenever indicator status is between $\pm 1/4$ division of zero in the indicator display mode.



Turns on whenever indicator status is near zero (NZ) in the indicator display mode using SI/FIL

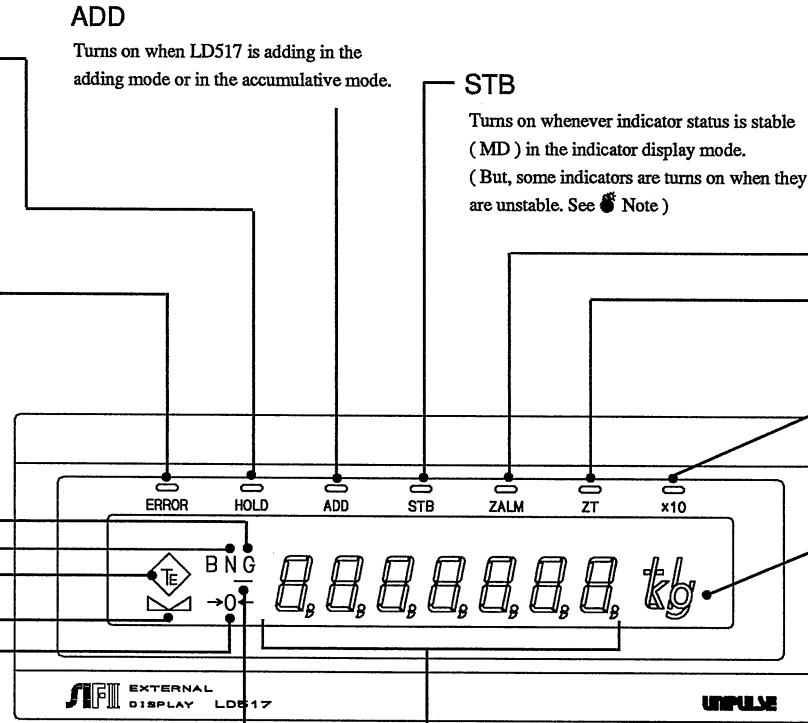


FIGURE DISPLAY

The following 9 types of figure are displayed.

- Value of indicator
- Gross weight
- Net weight
- Tare weight
- Adding value
- Accumulative value
- Accumulation times

※ Please see the explanation of rear panel as to how to select display 1) ~ 7).

※9) Overscale is displayed only when used in the indicator display mode.

8) Error

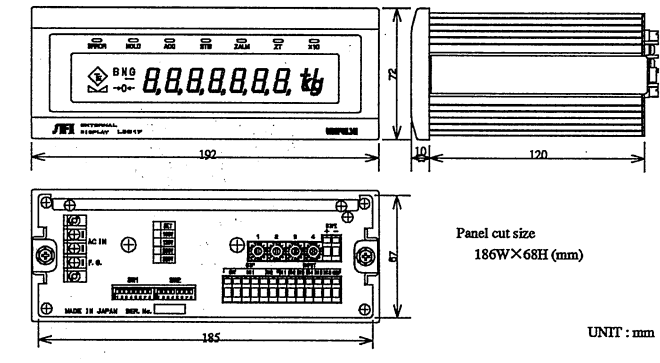
Indicator sequence error	Err 1~9
Indicator calibration error	cErr 1~9
Others error	Error

9) Overscale

Digital Indicator	
A/D convertor input over	OFL 1
A/D convertor input minus over	OFL 2
Indicated value > 99999	OFL 4

Loadcell Indicator	
A/D convertor input over	LOAD
A/D convertor input minus over	-LOAD
Net weight > Net over	OFL 1
Gross weight > Scale capacity + 9 digits	OFL 2
Gross weight > Gross weight over	OFL 3
Tare weight > 99999	OFL 4

DIMENSIONS



REAR PANEL

Terminal For AC Power

Connect the attached AC power cable.
Input voltage is AC100V, frequency 50/60 Hz.
Voltage can be selected at the delivery time from the following range.

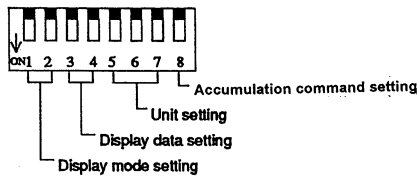
Set	Voltage Range	Fuse
100V	85~110V	1A/250V
120V	102~132V	
200V	170~220V	
220V	187~242V	

Frame Ground

Ground terminal.
The frame ground terminal must be grounded to avoid electric shock and interferences static electricity.

DIP Switch SW 1 For Setting

Set display mode, display data, unit, accumulative direction.



Display mode setting

Display mode	1	2
Smooth (Accumulation)	OFF	OFF
Step (Accumulation)	OFF	ON
Adding	ON	OFF
Indicator display	ON	ON

Step : LD517 display value = Accumulative value
Smooth : LD517 display value = Accumulative value + Indicator display value
(In the smooth display mode, change amount in a positive direction is added to accumulative value.)

Display data setting

Display weight value	3	4
Gross weight value	OFF	OFF
Net weight value	OFF	ON
Tare weight value	ON	OFF
Indicator display value	ON	ON

Unit setting

Unit display	5	6	7
non	OFF	OFF	OFF
t	OFF	OFF	ON
g	OFF	ON	OFF
k g	OFF	ON	ON
l b	ON	OFF	OFF

Accumulation command setting

Accumulative command	8
Auto print command	ON
IN2 input command	OFF

Accumulative mode & Adding mode

Accumulative mode

It accumulates input values obtained when Accumulative signal is entered. It can accumulate plural channels (2~4 ch).

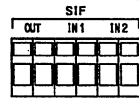
Adding mode

It adds input values of plural channels in a moment and display the added amount. 2~4 ch can be added.

SI/F Terminal

Conducts SI/F input, second SI/F input, and SI/F output.

Parallel two-wire cable or cap tire cable is good enough for wire rod.

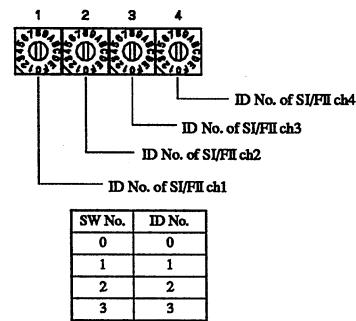


OUT : The last 5 figures of LD517 display is output using SI/F signal (SI/F OUT is optional.)

- IN1 : Input terminal of two-wire serial interface. It is directly connected to two terminal boards due to nonpolarization.
- IN2 : Input terminal for 2 channel of two-wire serial interface.

Rotary Switch For Setting SI/F/II ID

Setting of SI/F/II ID No.



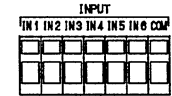
※ Please select either 0, 1, 2 or 3 of ID No.

SI/FII Terminal

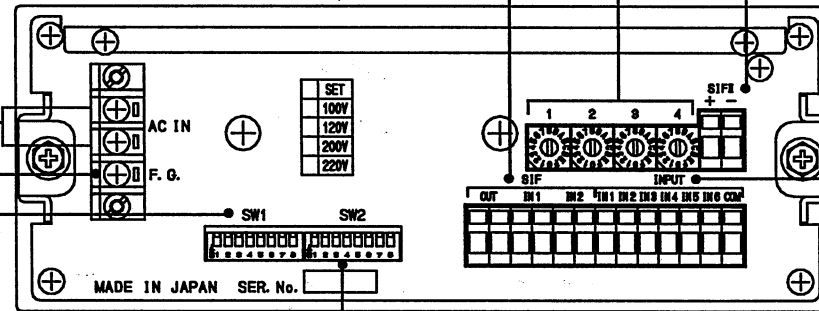
Terminal for two-wire high-speed serial interface.
Be careful when you connect cables as it has polarity.
Parallel 2-wire cable, capture cable are good enough for wire rod.
※SI/FII is optional.

Terminal For External Input

Terminal into which external command signal is entered.

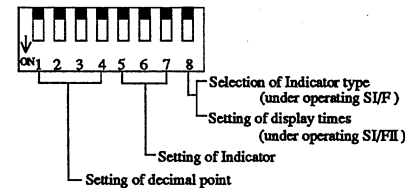


- IN1 : Input of accumulation clear
Accumulated value and times are cleared by short-circuiting this terminal with COM.
- IN2 : Accumulation command input
Accumulation of input values is conducted by short-circuiting this terminal with COM when display mode is accumulation and accumulation command is external input.
- IN3 : Input of accumulated times display command
Accumulated times are displayed by short-circuiting this terminal with COM when display mode is accumulation. (smooth or step)
- IN4 : Input of the last 7 figures display
When display values are more than 8 figures, the last 7 figures are displayed by short-circuiting this terminal with COM.
- IN5 : Hold input
Whenever this terminal is short-circuiting with COM, all displays are held. But accumulation and adding are conducted inside.
- IN6 : Terminal for no use
(Do not use for connection.)
- COM : Common for IN1~IN5



Dip Switch SW2 For Setting

Setting of decimal point, type of indicator and display times.



Setting of Indicator

Setting of Indicator	5	6	7
SI/F ch1	OFF	OFF	OFF
SI/F ch2 (1ch & 2ch)	OFF	OFF	ON
SI/FII ch1	ON	OFF	OFF
SI/FII ch2 (1ch & 2ch)	ON	OFF	ON
SI/FII ch3 (1ch & 2ch & 3ch)	ON	ON	OFF
SI/FII ch4 (1ch & 2ch & 3ch & 4ch)	ON	ON	ON

Setting of decimal point

DECIMAL POINT	1	2	3
No decimal point	OFF	OFF	OFF
000000.0	OFF	OFF	ON
00000.00	OFF	ON	OFF
0000.000	OFF	ON	ON
000.0000	ON	OFF	OFF
00.00000	ON	OFF	ON
0.000000	ON	ON	OFF
Indicator Display	ON	ON	ON

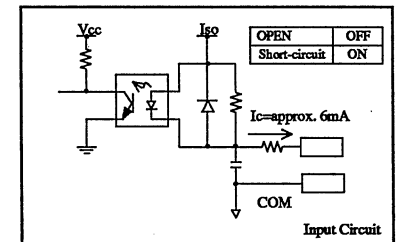
※SW4-4...Whenever OFF

Selection of Indicator type(SI/F)

Type of Indicator	8
Digital Indicator	OFF
Loadcell Indicator	ON

Setting of display times(SI/FII)

Display times	8
MAX 25 times/sec.	OFF
MAX 6 times/sec.	ON



Unipulse Corporation

9-11 Nihonbashi Hisamatsucho, Chuo-ku, Tokyo 103-0005
Tel. +81-3-3639-6120 Fax: +81-3-3639-6130